

Lake Macquarie Airport Procedures

YLMQ



CTAF

132.1

www.ylmq.com.au

Email: contact@ylmq.com.au

Phone: (02) 4944 9199

Operation Require Written Permission



Airport Circuit Procedures

General Procedures

Important note: Rescue Helicopter Operations take precedence at all times.
Monitor CTAF for Skydive Ops - jumping overhead and landing on site.

- Avoid all built up areas
- Avoid Golf Course to East
- No flight below 1000' AMSL
- No loitering in the circuit area
- Avoid overflight if possible
- Try to minimise noise as much as possible
- CTAF 132.1, currently called "Lake Macquarie Airport"
- No ops before 8.30am Saturday, Sunday and Public Holidays, except for flight planning



Airfield Data

- Contact – (02)49 449 199
- Email – contact@ylmq.com.au
- Rwy 07/25 – sealed, 11m wide
- TODA – 880m
- LDA – 810m Rwy 07, 720m Rwy 25
- CTAF – 132.1
- No fuel available



Airport Circuit Procedures

Arrivals

- All circuits left hand
- No touch and go's
- 1000' AMSL
- Avoid any built up areas
- Be aware of turbulence if crosswind due to trees
- Straight in approaches acceptable
- Go around early if in doubt due to poor over runs
- Be aware of sky dive ops possibly landing on Southern Tarmac area
- Trikes and Gyro's maybe operating on a tighter circuit
- Rwy 07 – Preferred runway
 - Avoid Golf Course
 - Fly Downwind to overfly inlet
 - Turn Base and Final over water
- Rwy 25
 - Fly Crosswind and Downwind along channel
 - Turn Base and Final over water



Inlet

RWY 07



RWY 25



Airport Circuit Procedures

Departures

- Gyro's may occupy runway for longer than normal due to building up rotor speed.
- Rwy 07
 - Back track available if not busy
 - Taxiway available on south side (unswept)
 - Run ups on turning bay just prior to takeoff
 - Depart along coast either direction
 - Do not overfly runway on departure
- Rwy 25
 - Run ups at hold facing North
 - Depart on Upwind, or Crosswind west of Swansea
 - Do not overfly runway on departure

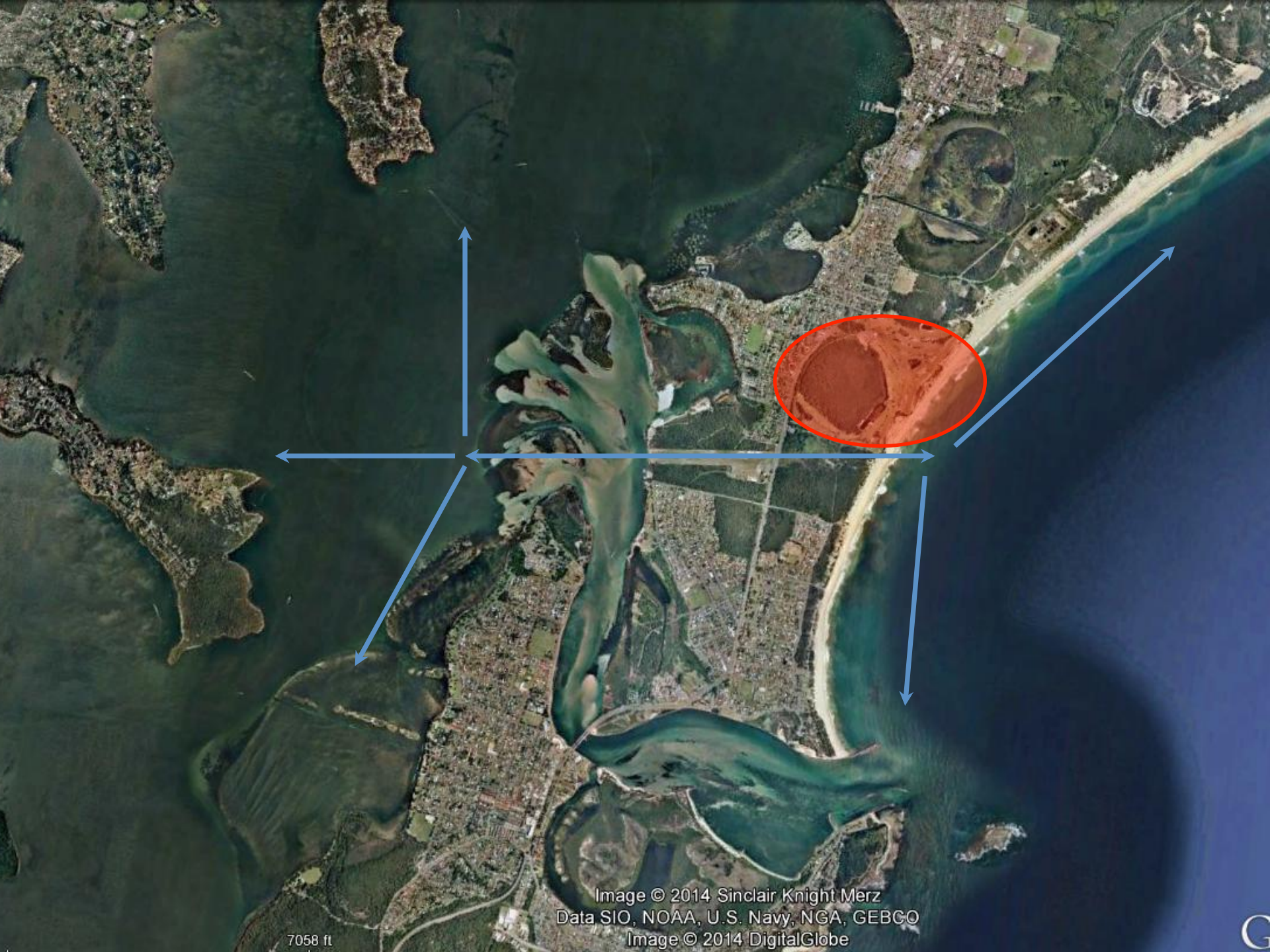


Image © 2014 Sinclair Knight Merz
Data SIO, NOAA, U.S. Navy, NGA, GEBCO
Image © 2014 DigitalGlobe

7058 ft

G



Airport Circuit Procedures

Emergency Procedures

Engine failure on landing

- If runway is guaranteed, continue approach
- If runway is marginal make an early decision for:
 - Rwy 07 – ditching in channel
 - Rwy 25 – beach
- A CRASH ON THE HIGHWAY WILL BE FATAL

Engine failure on takeoff

- Rwy 07 – ground loop if necessary to avoid road, otherwise straight ahead into scrub
- Rwy 25 – stop if you can, otherwise prepare for moisture in the cockpit