

# Lake Macquarie Airport Procedures

**YLMQ**  
✈️  
**CTAF**  
**132.1**

[www.ylmq.com.au](http://www.ylmq.com.au)

Email: [contact@ylmq.com.au](mailto:contact@ylmq.com.au)

Phone: (02) 4944 9199

Operation Require Written Permission



# GENERAL PROCEDURES

## IMPORTANT

**! - Rescue Helicopter Operations** take precedence at all times.

**! - Monitor CTAF for Skydive Ops** - jumping overhead and landing on site.

- Avoid all built up areas
- Avoid Golf Course to East
- No flight below 1000' AMSL
- No loitering in the circuit area
- Avoid overflight if possible
- Try to minimise noise as much as possible
- CTAF 132.1, currently called "Lake Macquarie Airport"
- No ops before 8.30am Saturday, Sunday and Public Holidays, except for flight planning



# AIRFIELD DATA

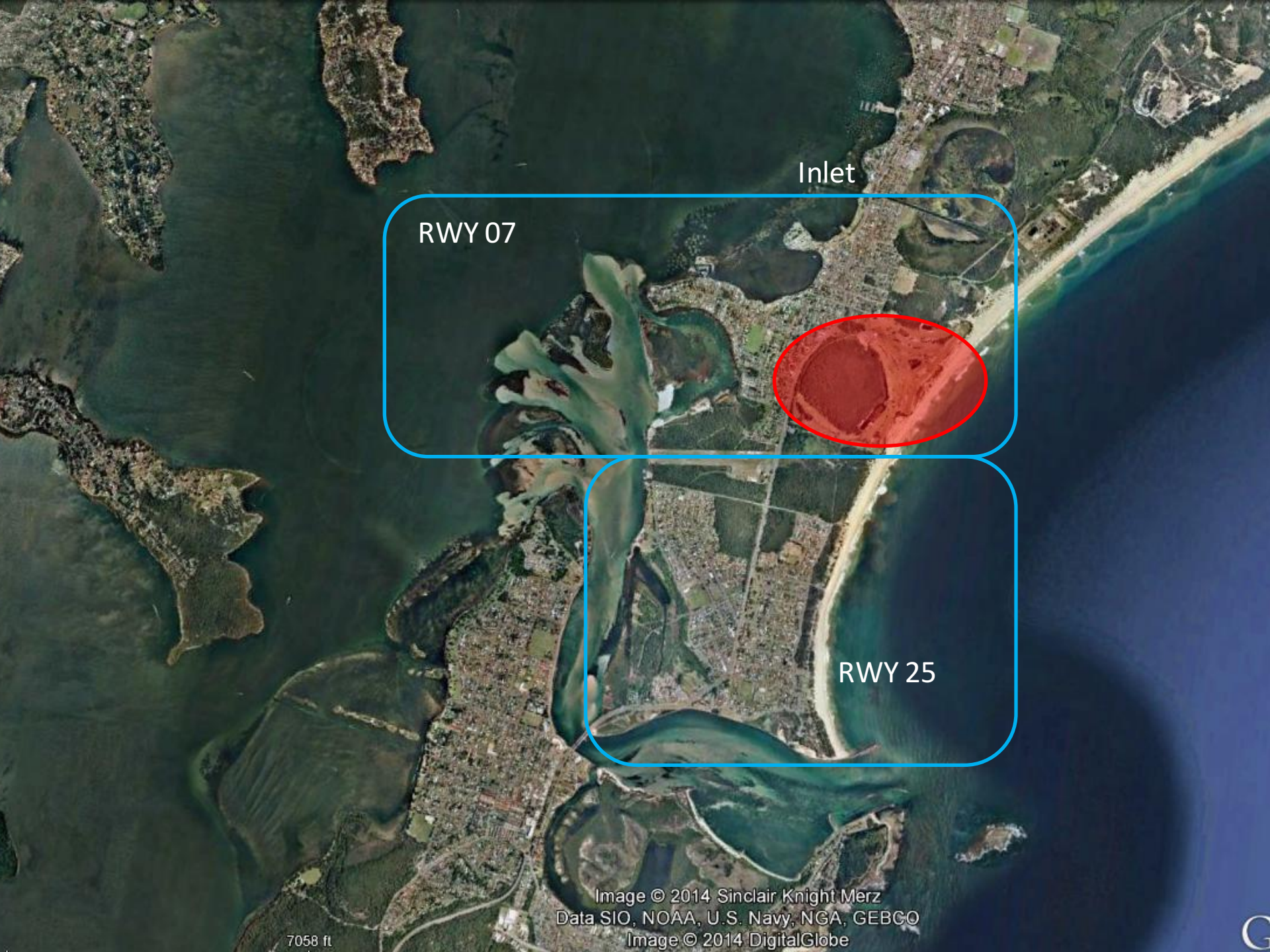
- Contact – (02)49 449 199
- Email – [contact@ylmq.com.au](mailto:contact@ylmq.com.au)
- Grass left and right 07/25 are part of the active runway and often in use
- The taxiway is on southern side of field when backtracking not available
- Rwy 07/25 – sealed, 11m wide
- TODA – 730m
- LDA – 670m Rwy 07, 670m Rwy 25
- CTAF – 132.1
- No fuel available



# ARRIVALS

- All circuits left hand
- No touch and go's
- 1000' AMSL
- Avoid any built up areas
- Be aware of turbulence if crosswind due to trees
- Straight in approaches acceptable
- Go around early if in doubt due to poor over runs
- Be aware of sky dive ops possibly landing on Southern Tarmac area
- Trikes and Gyro's maybe operating on a tighter circuit
- Rwy 07 – Preferred runway
  - Avoid Golf Course
  - Fly Downwind to overfly inlet
  - Turn Base and Final over water
- Rwy 25
  - Fly Crosswind and Downwind along channel
  - Turn Base and Final over water





Inlet

RWY 07

RWY 25



# DEPARTURES

- Gyro's may occupy runway for longer than normal due to building up rotor speed.
- Rwy 07
  - Back track available if not busy
  - Taxiway available on south side (unswept)
  - Run ups on turning bay just prior to takeoff
  - Depart along coast either direction
  - Do not overfly runway on departure
- Rwy 25
  - Run ups at hold facing North
  - Depart on Upwind, or Crosswind west of Swansea
  - Do not overfly runway on departure



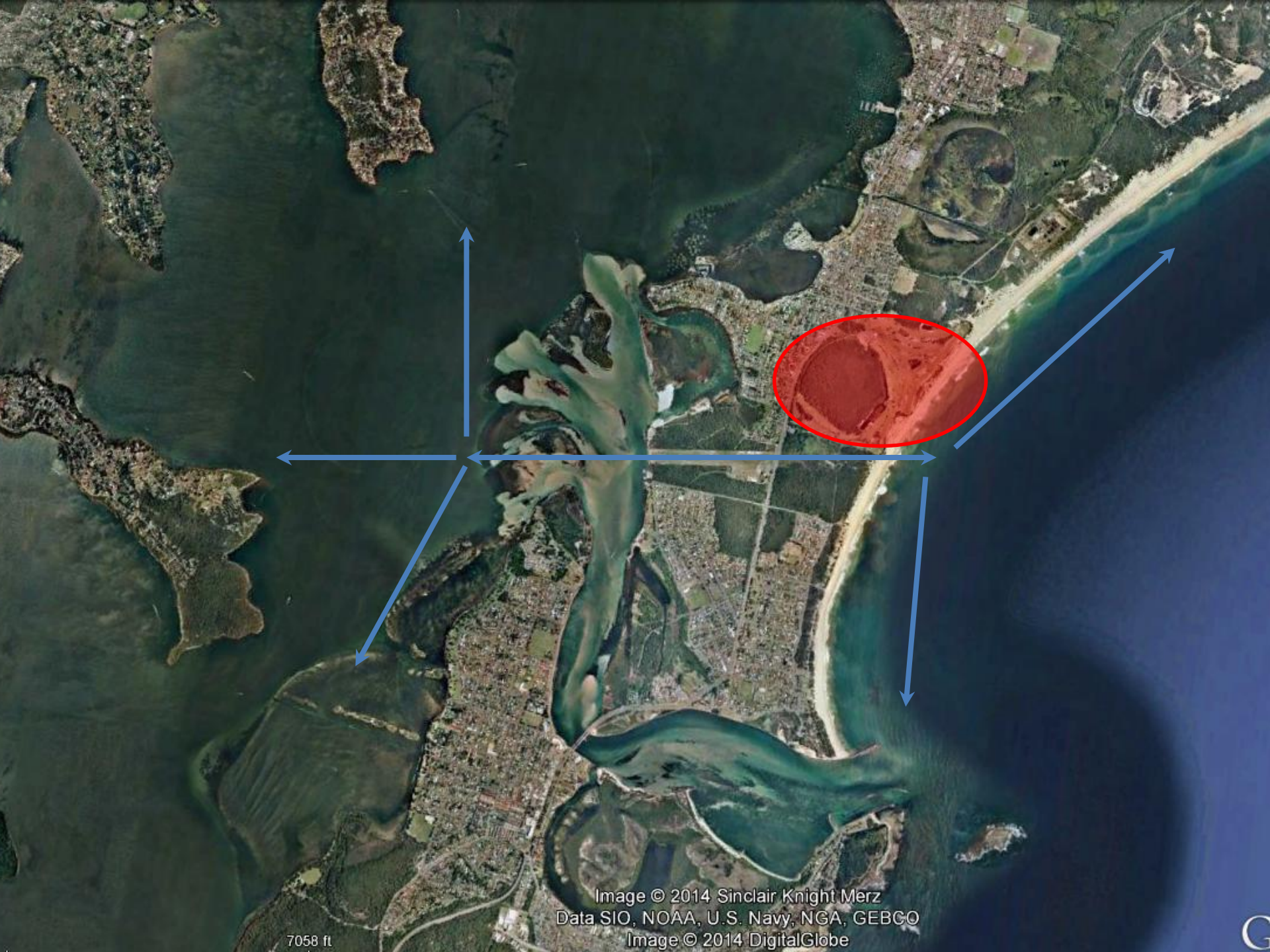


Image © 2014 Sinclair Knight Merz  
Data SIO, NOAA, U.S. Navy, NGA, GEBCO  
Image © 2014 DigitalGlobe

7058 ft

G



## EMERGENCY PROCEDURES

### Engine failure on landing

- If runway is guaranteed, continue approach
- If runway is marginal make an early decision for:
  - Rwy 07 – ditching in channel
  - Rwy 25 – beach
- A CRASH ON THE HIGHWAY WILL BE FATAL

### Engine failure on takeoff

- Rwy 07 – ground loop if necessary to avoid road, otherwise straight ahead into scrub
- Rwy 25 – stop if you can, otherwise prepare for moisture in the cockpit